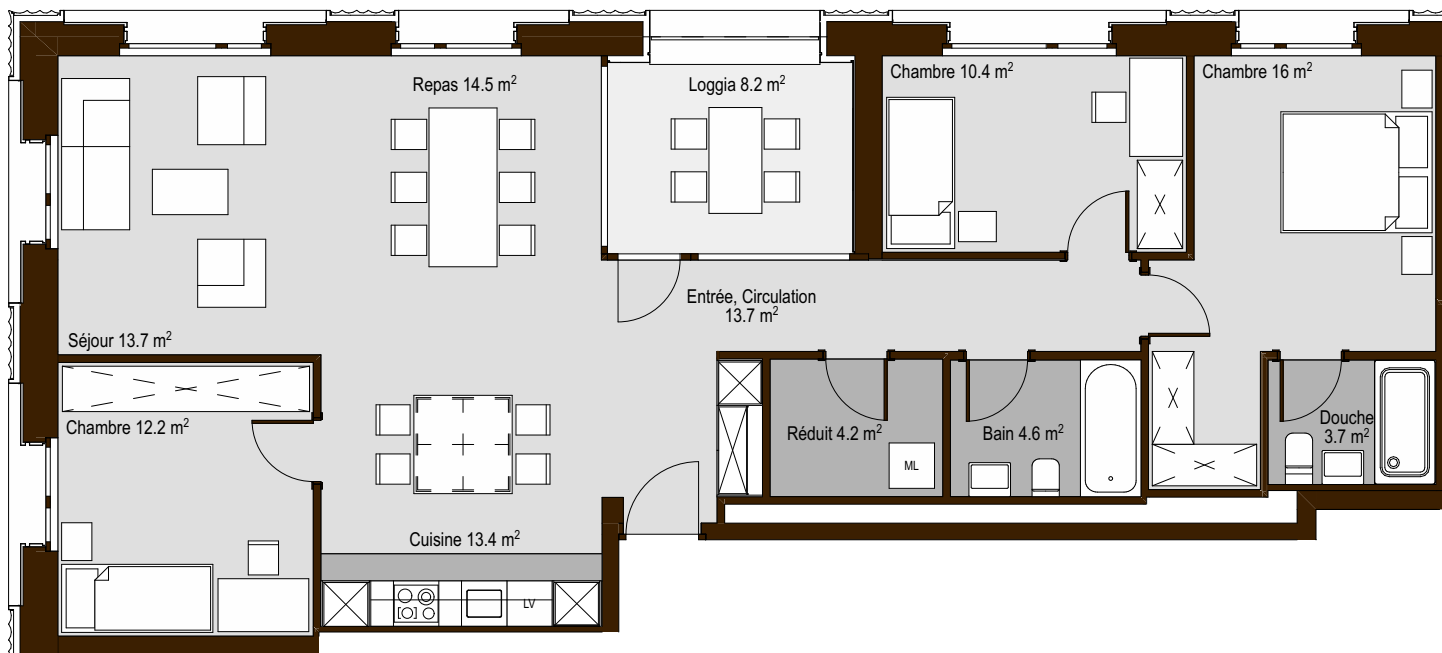


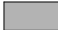


# L'ILOT DU LEMAN | B501 (5ème étage)

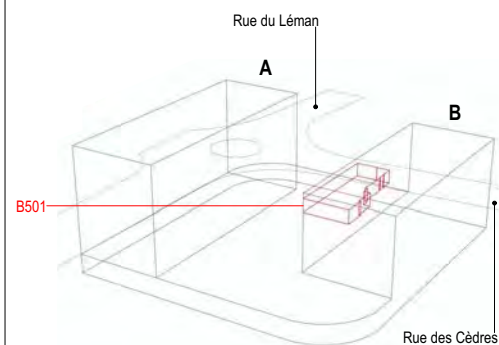
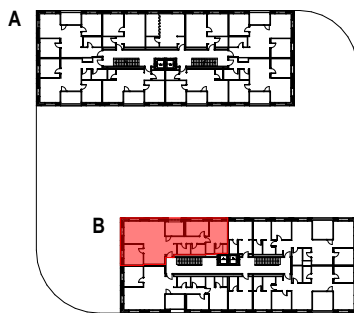


## Appartements 4 pièces 1/2

### Orientation Nord-Ouest

Surface brute: 130.8 m<sup>2</sup>  
 Surface brute loggia: 9.8 m<sup>2</sup>  
 Surface nette: 106.4 m<sup>2</sup>  
 Surface nette loggia: 8.2 m<sup>2</sup>

-  Carrelage
-  Parquet
-  Dallage loggia



084 | L'ILOT DU LEMAN

Commune de Martigny | parcelle n°606 et 2'909

**CPCV**

Rue de l'Avenir 11 | 1950 Sion  
 tél 027 327 32 16 | fax 027 327 32 81  
 Caisse de Pension de la Construction Valaisanne

PDL | Plan de location

Appartements 4 pièces 1/2 | immeuble B | Nord-Ouest

 **game coquoz**

Rue des Alpes 1 | 1920 Martigny  
 tél 027 722 31 16  
 info@gamecoquoz.ch | www.gamecoquoz.ch

plan n° 084\_Plan de location n°16B

échelle 1:100

date 09.12.2020

dessin JM

mod -



**16B**